



## 5 Dunne House Farman Drive

Hoo, Rochester, ME3 9UJ

**Offers In Excess Of £225,000**



OPEN DAY 25th JUNE

**\*2 YEARS OLD\* } \*POPULAR RURAL VILLAGE\*\*2 BEDROOMS\*\*ENSUITE\*\*OPEN PLAN LIVING/KITCHEN\*\* BALCONY\***

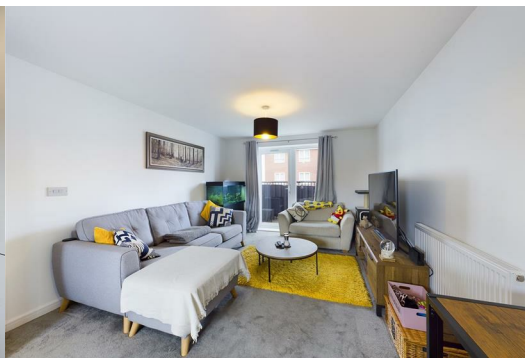
This modern 2 bedroom 1st floor apartment with allocated parking is available to view now. Upon entering the property via the communal entrance with door entry system, you will find a winding hallway leading to most of the rooms. Off of the master bedroom is the ensuite shower room and the French doors from the lounge lead to the private balcony overlooking the communal green. The second bedroom is large enough for a double bed and the master bathroom comes complete with three piece suite with electric shower over the bath. The contemporary lounge and kitchen is all open plan and you'll find a range of built in appliances, which is perfect when purchasing a 1st home. There is plenty of storage in the hallway and the property is move in ready. Don't delay in booking your slot to view this fantastic home!

Council Tax band B

Lease length 999yrs

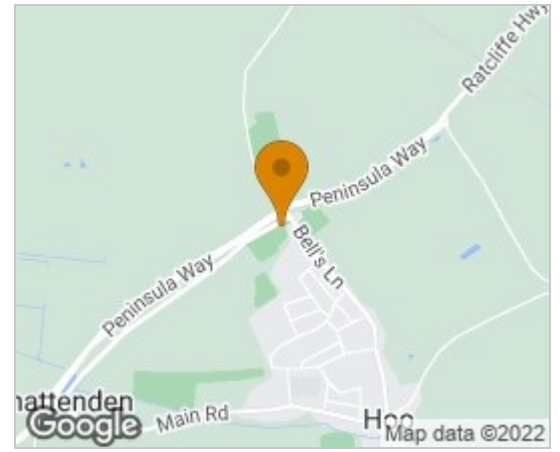
Ground rent £215pa

Service charge £997pa



- communal entrance
- hall way
- bedroom 1
- ensuite
- bedroom 2
- bathroom
- lounge/kitchen
- balcony
- communal garden
- parking

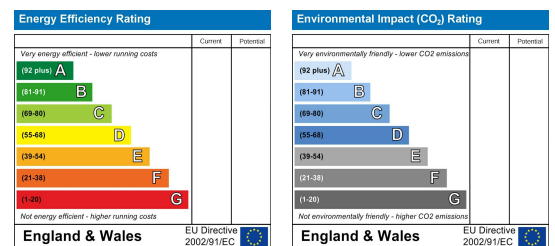
## Area Map



## Floor Plans



## Energy Efficiency Graph



These particulars, whilst believed to be accurate are set out as a general outline only for guidance and do not constitute any part of an offer or contract. Intending purchasers should not rely on them as statements of representation of fact, but must satisfy themselves by inspection or otherwise as to their accuracy. No person in this firm's employment has the authority to make or give any representation or warranty in respect of the property.